

# US BELTIE NEWS



## PRESIDENT'S MESSAGE



### President Janie Tripp

Thank you exhibitors, members, and volunteers who attended and made the 2020 National Belted Galloway Show and the 2020 Kathi Jurkowski Belted Galloway Junior Show a huge success! What a wonderful week of cattle, competition, and community. It is always exciting to witness Belted Galloway cattle displayed on the green shavings.

Even more impressive to me was the outstanding display of ability, sportsmanship, and knowledge shown by most of our junior members. Congratulations to all the youth who participated in the events of the week for a job well done!

Because of COVID-19 the North American International Exposition created new logistics to hold shows. I want to thank those who volunteered and made it possible for our exhibitors to enjoy. Thank you to Diane Gushee (ME), Jon Bednarski (KY), Wesley Penrod (IN), and my husband, Marty Tripp, for working so hard during the event. Thank you Michelle Ogle (NJ) who handled all the entries remotely. We experienced mild, mid-November weather while in Louisville! Belted Galloway cattle were stalled in the West Wing Annex — six minutes away from Broadbent Arena, where the show was held. I am so thankful for the efforts of all the exhibitors who took all the arrival, stalling, and showing changes in stride because of the circumstances.

I wish all Belted Galloway breeders and their families a very blessed 2020 holiday!

### Canadian Livestock Records Corporation (CLRC)

All Registrar Services  
2417 Holly Lane  
Ottawa, Ontario, CANADA K1V 0M7

#### Caleigh Jerry

caleigh.jerry@clrc.ca  
Phone 877-833-7110, ext. 315  
Fax 613-731-0704

#### Lisa Hutt

lisa.hutt@clrc.ca  
Phone 877-833-7110 Ext. 312  
Fax 613-731-0704

#### Office Hours

8:00 a.m. to 4:00 p.m. Eastern Time, Monday to Friday.  
Lisa may also be reached from 4:00 to 6:00 p.m. from Monday to Wednesday and until 5:30 p.m. on Thursday. She is not in the office on Friday, but Caleigh is still available to assist you that day.

**Reminder: Any application (membership, transfers, registration, etc.) submitted to CLRC will receive a \$10 transaction fee.**

#### IMPORTANT ANNOUNCEMENT:

A transaction fee of \$10 needs to be added to any submission of applications (membership, transfers, registration) to CLRC. CLRC has received an increasing number of applications without the \$10 fee. As it is, each unpaid handling fee is costing BGS \$11.

## NEW MEMBERS

Will Qualls & Megan Barton  
Dreamcatcher Cattle Ranch  
6185 North 224th St West  
Haskell, OK 74436  
(918) 482-1300

Ronald & Nancy Bullock  
PO Box 467  
Aubrey, TX 76227  
(940) 390-6060

Max & Nancy Christensen  
850 McAdoo  
Blackfoot, ID 83221  
(208) 406-9302

2H Galloway  
c/o The Holley Family  
504 W 4th St  
Leedey, OK 73654  
(580) 938-1784

Randal Hallum  
Hallum Ranch  
36550 Ew 1220  
Wewoka, OK 74884  
(405) 380-8655

Derek Holland  
PO Box 821  
Athol, ID 83801  
(256) 614-2077

Jimmy Johnson  
289 County Rd 3147  
Quitman, TX 75783

Maryann Layton  
8085 E New Carlisle Rd  
New Carlisle, OH 45344  
(937) 308-4417

Malcolm Mead  
1 German Hill Farm Rd  
North Chittenden, VT 05763

Jordan & Brandi Mitchell  
15306 2 Mile Rd  
Hersey, MI 49639

Rex & Nicki Morgan  
4304 S Pine  
PO Box 307  
Guthrie, OK 73044

Meghan Nedvechi  
4765 S ½ Rd  
De Beque, CO 81630  
(970) 433-8742

Gregory Newcomb  
368 South Meadow Rd  
Perry, ME 04667  
(202) 853-4851

Lara Rittenhouse  
4352 School Rd  
New Carlisle, OH 45344

Jon Schwegler  
Sky River Farms, Inc  
13323 134th Dr SE  
Snohomish, WA 98290  
(206) 423-1288

Amnesty Woods  
Mosaic Family Farm  
13093 Orchard Blossom Lane  
Chico, CA 95973  
(530) 520-7352

## BALE GRAZING: AN OPTION FOR EASIER WINTER FEEDING

by Heather Thomas Smith, Rancher  
As seen in BEEF Magazine, NOVEMBER 2020.

A growing number of cattlemen are cutting winter feed costs and making winter feeding easier; they have opted to let the cows feed themselves. Bale grazing—leaving big round bales in the field where they harvested or hauling bales to a certain pasture to set out in rows for strip grazing in winter—can be more cost-effective than hauling hay to cattle daily.

This also adds fertility to those fields or pastures because it concentrates the cows temporarily in the areas where they are eating bales. The manure deposits are gradually moved across the field as the cows go to the next row of bales.

Kevin Sedivec, professor of animal science at North Dakota State University, was involved with a three-year study with several producers in central North Dakota a few years ago, to see if bale grazing increases forage production. The spot where each bale had been set was marked, and later assessed for a certain distance around each bale.

“The first summer after the bales were eaten, we looked at forage production and forage quality. There was a 50% increase in forage production in the area where a bale had been. Additionally, forage quality was almost doubled in crude protein compared with control areas in the same field, (same soil type, same vegetation, but without the bale grazing),” he says.

The plants in the control areas had about 9.5% protein value. “Where we bale grazed, crude protein content in the forage the following spring was almost 16% protein, and a higher palatable feed; the cows were seeking it out,” says Sedivec. There was a 50% increase in forage production 15 feet from the bale center, where the manure and urine was deposited by the cattle eating on the bale.

The second summer after bale grazing, we saw increased production throughout the whole profile—from zero (center of where the bale had been) to 15 feet. It ranged from 130% of normal (a 30% increase) to as high as 180% (80% increase).

Improving plant nutrition

“We also saw an increase in phosphorus and potassium content of the grass for two years following bale grazing. This was also a plus, since our Northern Plains are usually short on phosphorus; it is the most limiting mineral in the nutrients for our native grasses,” he says.

Various nutrients were deposited on the soil by the fecal matter and urine and the grass was picking it up. “Instead of

CONTINUED ON PAGE 5...

## CALENDAR REMINDERS

### RESCHEDULED FOR 2021:

\*A complete list of cancelled and rescheduled events can be found at [www.beltie.org](http://www.beltie.org)

No new events.

# THE NATIONAL BELTED GALLOWAY SHOWS

## OPEN SHOW-30 ENTRIES

### **Champion Junior Heifer Calf**

Sunnybrook Serenade

### **Reserve Champion Junior Heifer**

Sunnybrook Lana

### **Champion Senior Heifer Calf**

Oatley's Farm Rumchata (AI)

### **Reserve Champion Senior Heifer Calf**

HFB Sydney

### **Champion Junior Heifer**

Harmony Meadows Nova

### **Reserve Champion Junior Heifer**

Sunnybrook Rosa

### **Senior Champion Heifer**

Moonshadow Pixy

### **Reserve Champion Senior Heifer**

Moonshadow Peppermint

### **Grand Champion Heifer**

Harmony Meadows Nova

### **Reserve Grand Champion Heifer**

Oatley's Farm Rumchata (AI)

### **Grand Champion Cow/Calf Pair**

Sunnybrook Jade

### **Champion Junior Bull Calf**

Sunnybrook Vito

### **Champion Senior Bull Calf**

Oatley's Farm Omar

### **Reserve Grand Champion Senior Bull Calf**

Eckelman's Ferdinand

### **Champion Junior Yearling Bull**

Oatley's Farm Schweddy

### **Grand Champion Bull**

Oatley's Farm Omar

### **Reserve Grand Champion Bull**

Sunnybrook Vito

### **Get of Sire**

HCS Flannagan – Sunnybrook Farms

### **Produce of Dam**

Sunnybrook Jade – Sunnybrook Farms

### **Breeders Herd**

Sunnybrook Farms

### **Champion Purebred Steer**

Sunnybrook Barron

### **Reserve Champion Purebred Steer**

Windswept Phoenix

### **Champion Percentage Steer**

Rock Creek Pepe

### **Reserve Champion Percentage Steer**

Crooked Creek Fitzgerald

## JUNIOR SHOW- 34 ENTRIES

### **Champion Appendix Heifer Calf**

Crooked Creek Giselle shown by Sawyer Bales

### **Champion Heifer Calf**

Crooked Creek Guinevere shown by Sawyer Bales

### **Champion Junior Heifer**

Harmony Meadows Nova shown by Sophia Romani

### **Reserve Champion Junior Heifer**

Magnolia Trace Grace shown by Sawyer Bales

### **Senior Champion Heifer**

Moonshadow Pixy by Ashlyn Romani

### **Reserve Champion Senior Heifer**

Moonshadow Peppermint by Katy Snow

### **Grand Champion Heifer**

Harmony Meadows Nova shown by Sophia Romani

### **Reserve Champion Heifer**

Oatley's Farm Rumchata (AI) shown by Olivia Oatley

### **Grand Championship Purebred Steer**

Oatley's Farm Lionel shown by Darci Snow

### **Reserve Champion Purebred Steer**

Harmony Meadows Indigo shown by Sophia Romani

### **Champion Percentage Steer**

Rock Creek Pepe shown by Alexa Adler

### **Reserve Champion Percentage Steer**

Crooked Creek Fitzgerald shown by Sawyer Bales

### **Showmanship**

Junior Champion: Alexa Adler

Junior Reserve Champion: Katy Snow

Intermediate Champion: Ashlyn Romani

Intermediate Reserve Champion: Sawyer Bales

Senior Champion: Olivia Oatley

Senior Reserve Champion: Sophia Romani

### **Overall Showmanship**

Champion Olivia Oatley

Res Champion Sophia Romani

*Congratulations!*

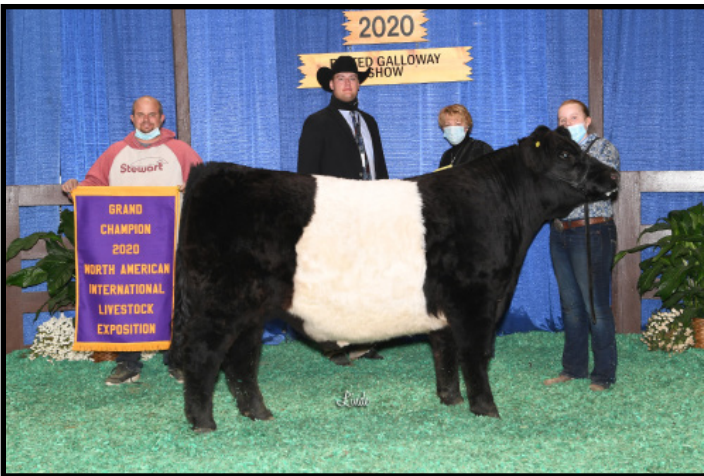
# THE NATIONAL BELTED GALLOWAY SHOWS



**GRAND CHAMPION BULL**  
 Oatley's Farm Omar 45309-B  
 Bred & owned by Victoria Oatley (RI)



**GRAND CHAMPION FEMALE (OPEN & JR)**  
 Harmony Meadows Nova 44762-B  
 Bred & owned by the Romani Family (RI)



**GRAND CHAMPION STEER (OPEN)**  
 Sunnybrook Barron 45020-B  
 Bred by Sunnybrook Farms (IL), Shown by Kaylee Eckelman (IN)



**GRAND CHAMPION PERCENTAGE STEER (OPEN & JR)**  
 Rock Creek Pepe 44942-B Steer  
 Bred & owned by Alexa Adler (IN)



**GRAND CHAMPION COW/CALF PAIR**  
 Sunnybrook Jade 39401B  
 Bred & Owned by Terry & Julie Willis (IL)



**GRAND CHAMPION APPENDIX HEIFER (JR)**  
 Crooked Creek Giselle A45662B  
 Bred & owned by Sawyer Bales (IN)

# THE NATIONAL BELTED GALLOWAY SHOWS



## OVERALL SHOWMANSHIP Olivia Oatley (RI)

**Open Exhibitors:** Countyline Belties (IN), Crooked Creek Farm (IN), Eckelman Farm (IN), Hadden Farms (IL), Harmony Meadows Farm (RI), Hudson Jackson (IN), Oatley's Farm (RI), Penrod Farm (IN), Rock Creek Farm (IN), Sunnybrook Farms (IL), Snow Family (IN)

**Junior Exhibitors:** Alexa Adler (IN), Sawyer Bales (IN), Benjamin Brooks (MD), Lincoln Brooks (MD), Kaylee Eckelman (IN), Abigail Gant (NC), Blake Hadden (IL), Hudson Jackson (IN), Tommy McGuire (IN), Olivia Oatley (RI), Ashlyn Romani (RI), Sophia Romani (RI), Katy Snow (IN), Darci Snow (IN)

## BALE GRAZING: AN OPTION FOR EASIER WINTER FEEDING

going into the soil profile and deposited down-slope, the grass was increasing in quality via those nutrients, but we did see a four-fold increase in nitrogen in the soil," says Sedivec.

Some producers feel that concentrating the cattle around the bales would damage the soil, possibly beating out the plants or causing soil compaction. "We checked for these issues, and looked for evidence of compaction and found none. Even if there is some compaction at the time of grazing, the freeze-thaw cycles here on the Northern Plains would take it back out," he says.

"As long as the cows are not bale grazing after the first of April—when the grass is trying to grow, and when the frost has already come out—you won't see compaction. If a person is bale grazing later in the spring, you don't get the benefit of the freeze-thaw cycle because the ground has already thawed," he says.

He's not sure how this would work in areas farther south where there isn't much frost in the winter to counteract compaction. There may also be some variability in overall results with climate differences, but in general the production, fertility and quality will be increased, without impacting animal performance.

"In our study, however, every producer's management was different. One rancher supplemented his cows while they were bale grazing, and the other three did not. One

of them made his cows clean up the old bales before they went to the new ones. Another rancher did not push his cows at all and ended up with too much litter. He actually lost (forage) production the first year after bale grazing because there was so much litter that the grass couldn't grow up through it and production was cut in half."

Yet the next year, during a drought, those areas had tremendous production because all that litter held moisture. In the second growing season after the bale grazing, that producer actually had the greatest increase in forage production.

"The litter had broken down by then and was still holding moisture. That rancher grew more grass in those areas than he did in other areas of the field," says Sedivec. In subsequent years, the litter is a big plus, but if there is too much the first year it can cut down production.

"The fourth rancher did it about right. He's been bale grazing a long time and uses this as a tool to increase forage production on many of his fields and pastures. He grazes the bales fairly hard but leaves some litter.

"He gets increased production the first, second, and third year afterward, whereas the producers who leave too much litter see a decline in production the first year. You give up a year of production if you leave too much; it's better to make the cows clean up more of it. Yet each producer has different goals," explains Sedivec.

# FOR SALE

**IA-** Wagner Farms, Tipton, IA is offering an outstanding 3 yr old red bull Eagle's Talon ( AI ) 41278-R for sale. Contact Kathy or Mike Wagner at wagnersbeltedgalloways@gmail.com or call (563) 357-6992 for more info.

**KS-** Excellent bull for sale. Hiland Oaks Captain 39341-B calved September 8, 2015. "Captain" came from Jennifer Lohman in Sperry, IA in 2017. Captain's pedigree can be seen at the CLRC site. Nice fellow but I have had him long enough that his daughters are coming into the herd. Contact Rebecca Schilling, Bear Springs Farm, Hiawatha, KS bschilling747@yahoo.com or call (785) 742-3159 and leave a phone message.

**MD-** Two registered heifers, Driftwood, Aldermere and Fearington heritages. Also one three year old registered (Registration 44336) and one two year old registered (Registration 44527) bulls. Contact Debra Speyer, Shoulderbone Farms, Jarrettsville, MD (215) 519-6426 or ShoulderboneFarms@yahoo.com.

**IN-** Armstrong Farm has two black beltie registered cow/calf pairs for sale. Both with first calves. Calves were born in July. Also available, five unregistered black heifers. Please call or text Cameron Lonergan, Brookville, IN at (513) 594-3341 or email cameron.lonergan@wcpconv.com

**TX-** J & N Ranch has several young females available. A seven month old belted heifer, and weaning heifers available April 2021, offered for sale, deposits will hold until 6 months old. All of these heifers have beautiful belts. Please call Nancy Vega, West Point, Texas at (512) 825-5674 or email j\_n\_ranch@yahoo.com.

**OH-** Several cow/calf pairs for sale in Ohio. Calves are all heifers born this summer. Cows 4-6 years old and are registered; heifers are registration pending. All black with full white belt. The cows have been exposed to a registered Beltie bull for a couple months. Also, several heifer calves (born this summer) for sale. Email Jenifer Franz at downhomefarms@hotmail.com for more info. Down Home Farms, Mt Gilead, OH (419) 948-0207.

**IN-** Herd reduction due to illness. Heifers, cows, calves. David Husted, Isidore Valley Farm, Ripley County, IN. (317) 372-4948 or hustedd2@gmail.com

**OR-** Five registered Belted Galloway heifers. All have nice belts and excellent bloodlines – some Aldermere. Would make a great addition to any herd. Pricing flexible for multiple purchases. For additional information contact Dike Dame, Anchor Farms, Yachats, OR at dikepdx@gmail.com or (503) 789-3521.

**MI-** Countryside Acres has 14 heifers for sale at various ages. We are trying to reduce our herd to a more manageable size and will offer them at low prices. We are located in Southwest Michigan. Please call Kreg Kincaid, Bloomingdale, MI at (269) 370-1800 or email at kreg@countryside-homes.com.

**OK-** Five fancy full-belt black heifers for sale. All are registered and out of a well-established herd at Waits Ridgeview Ranch west of Stillwater, OK. Very gentle and easy to handle. Would make a great starter herd. Please contact David Waits, Orlando, OK at dwaits@pldi.net or (405) 747-8874.

## Double M Ranch Dawson Masters



173 HCR 3303 W  
Malone, TX 76660  
972-465-0339

TxBeltedGalloway@yahoo.com  
www.doublembelties.com

**Y-KNOT** Registered Belted Galloway Cattle



➤ Heifers, Cows & Bulls available  
 ➤ Organic : Wheat, Forage & Produce  
 ➤ Retail USDA Grass Fed Beltie Beef

*Cateline, Savannah, Nina and Jeter Isely*

Bird City, Kansas  
 (785) 734 2380  
 yknotfarmandranch@gmail.com


 Y Knot Farm & Ranch      yknotorganic.com

**FARM & RANCH**

**RECHARGE RANCH BELTIES**

ERIN AND BRIAN O'ROURKE

*"Stay and play with the Belties at a beautiful home and land."*



Facebook: Recharge Ranch  
 Vrbo.com/457371 for reference  
 Bois D'Arc, Missouri  
 (Springfield — 1 hour from Branson)  
 (816) 718-1377  
 brian@midwestpowerindustries.com

**Ledgestone Farms**




Bob & Sheri Riley  
Blanco, TX

**830-833-4457**  
ldgsin@moment.net

Registered Belted Galloway Cattle

www.LedgestoneFarms.com



David Garbasz  
Owner

Nick Schoellig  
Farm Manager

440 Hosner Mountain Road  
Stormville, New York 12582

(845) 656-4435  
Nick.Schoellig@gmail.com

**KIYIWANA FARM**

Mountain High Mini Cows  
4527 Yellow Creek Rd  
Evanston, WY 82930

Michael & Stacey Wilkerson  
307-789-2469  
Mountainhighminicows.com



Registered Belted Galloway Cattle

**UPHILL UHF FARM**

•Registered Belted Galloway and Galloway Cattle•

Jonathan Kagan, Owner      2947 Salt Point Turnpike  
Jerry Stephens, Manager      Clinton Corners, NY  
845. 594.9749

**Tattoo Year Code**

The year code on tattoos for animals born in year **2020** is



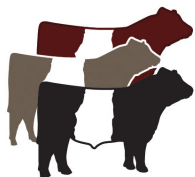
**H**



**SUTLIFF BELTIES**

Greg & Pat Hipple - Solon, IA  
319-430-6664 - sbelties@gmail.com

**About Classifieds:** Your classifieds required contact information - name, farm, location, phone and email. All classified ads are automatically placed on beltie.org with a two-month limit on classified insertions. Photos are FREE when placed on beltie.org. One photo per animal. Email ads to executivedirector@beltie.org or by fax (608) 527-4811 or phone (608) 220-1091. We encourage members to submit ads by the 25th of the month to be included in the upcoming issue.

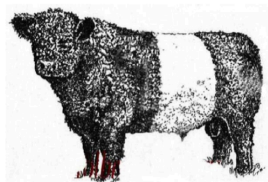


## Belted Galloway Society

Dr. Victor Eggleston, Executive Director  
N8603 Zentner Rd, New Glarus, WI 53574  
executivedirector@beltie.org  
Phone (608) 220-1091 Fax (608) 527-4811

## HOLBROOK HILL FARM

*World Class  
Genetics  
Imported  
Semen*



*Young Herd  
Sires  
Open Heifers  
available*

Steven Silberberg  
47 Holbrook Hill Road  
Bedford, NH 03110

Phone: 603-668-6400  
Fax: 603-668-6470  
E-mail: hhf18@aol.com

## MAGNOLIA TRACE FARM

**Herd Sires - Females - Semen - Embryos**



**Marty & Janie Tripp Brookhaven, Mississippi**  
**(601) 754-3993 (601) 833-3993 mtfbelties@gmail.com**

RANDY HALL  
(207) 860.8431  
DUSTIN JAMES  
(207) 491.5980

EAST DIXFIELD, MAINE



**WHERE TOMORROW'S GENETICS BEGIN TODAY**



## Anderson Hill Farms

*Mike Allen, Manager (802) 353-8606*  
300 Anderson Hill Road, West Rutland, Vermont 00577  
andersonhillmike@gmail.com  
www.andersonhill.com

Office: (802) 438-4900

Fax: (802) 438-2898