

US BELTIE NEWS



PRESIDENT'S MESSAGE



President Janie Tripp

Happy September! What a month August was with weather! I hope that all of our membership was safe from the storms. Massive disruptions across the livestock industry have

affected us all due to coronavirus and the Belted Galloway breed. I am excited that our Belted Galloway exhibitors will be able to show their cattle at World Beef Expo in Milwaukee, Wisconsin later this month. On a side note, I showed my cattle at what routinely was a small show here in Mississippi. But because so many shows have been cancelled, over 400 animals were shown. Exhibitors are adapting, but for those who organize shows, it takes some creative planning.

Regarding the 2020 North American International Livestock Exposition (NAILE), and according to their Facebook page, the NAILE submitted a plan through the Kentucky governor's office's Healthy at Work initiative to have the event this year.

Once a final decision is made to hold the event, they will let everyone know and will make the entry forms and the premium book available. They communicated that they appreciate everyone's patience during this unprecedented time.

I have read that the Kentucky State Fair, which was held in the same complex as the NAILE, was also held on a very limited basis due to strict Covid-19 health guidelines dictated by the State of Kentucky. I also read that depending on the outcomes from that event, further evaluations would be considered to tweak, if necessary, the current plans for the NAILE. The event was "participants only" for the livestock shows and changes to the stall areas, flow of people and animals were part of those changes. Obviously, once the NAILE staff finishes a review of the State Fair outcomes, we will know soon.

As I have stated previously, the only reason the 2020 Belted Galloway open and junior shows would be cancelled is if the North American International Livestock Exposition cancels the event. Thank you everyone for your ongoing patience.

NEW MEMBERS

J. Don & Rebeca Book
Bar B G
293 E 47 Highway
Girard, KS 66743
(620) 232-9003

David & Samantha Crook
Rod & Gun Club Stables, LLC
4000 N Commerce
Ardmore, OK 73401
(580) 220-4405

Eric Gay
16205 Valley View Rd
Shawnee, OK 74801
(918) 684-8660

Nathan Gay
16205 Valley View Rd
Shawnee, OK 74801
(918) 684-8660

Goshen Farms
c/o Kyle Underwood
255 Ramsey Bridge Rd SE
Cleveland, TN 37323
(423) 310-1450

Aubray Helm
12600 Lazy Acres Ct.
Nevada City, CA 95959
(408) 314-3773

Nick Keith
17345 Tuolumne Rd
Tuolumne, CA 95379
(209) 768-8000

LD Farms
c/o Ben & Melissa Lower
29 Depot St
Jay, ME 04239
(207) 645-6121

Mike & Shirley Liggett
Burton Belties
1940 FM 1697
PO Box 205
Burton, TX 77835
(832) 275-5145

Adam & Larissa Michaud
Circle Am Cattle Co.
22451 State Highway 38
Marshfield, MO 65706
(417) 830-8222

Angela Olson
PO Box 448
Canyon City, OK 97820
(541) 575-3505

Ernie Pate
122 Steele Meadow Ct
Azle, TX 7602
(817) 851-7394

Rebel Ranch
c/o Jd Weiss & Twila Nemecek
8200 County Rd 132
Penrose, CO 81240
(719) 551-9216

John Hoshaw & Barbara Reif, 8058
108th St SE
Middleville, MI 49333
(989) 430-8196

Gary Rohde
4593 S Idlewild Rd
Salt Lake City, UT 8412
(801) 634-3868

Bill & Virginia Sasser
PO Box 515
Perkins, OK 74059
(405) 880-0491

David Sparks
E-7 Ranch
104 N Valley St
Cuero, TX 77954
(361) 652-2543

Summer Harvest Farms
421 Issac Budd Rd
Southampton, NJ 08088

Ben Yoder
469 Albright Rd
Meyersdale, PA 15552
(828) 582-9407

CALENDAR REMINDERS

WORLD BEEF EXPO- SEPTEMBER 25-27

Milwaukee, WI. Contact office (920) 479-0658 or info@worldbeefexpo.com.

2020 WESTERN BELTED GALLOWAY ASSOCIATION ANNUAL MEETING- OCTOBER 2-3

Peppermill Resort Casino, Reno, NV. Contact Ken Bajema, Secretary/Treasurer, (360) 837-3273 or kdbajema@gmail.com.

THE KATHI JURKOWSKI NATIONAL BELTED GALLOWAY JUNIOR ASSOCIATION SHOW- NOVEMBER 18

Louisville, Kentucky. 8 am in Broadbent Arena at the North American International Livestock Exposition. Cattle arrive Monday, November 16, 2020. Check-in Tuesday, November 17, 2020. Contact Janie Tripp (601) 754-3993 or mtripp11@yahoo.com.

THE NATIONAL BELTED GALLOWAY OPEN SHOW- NOVEMBER 19

Louisville, Kentucky. 8 am in Freedom Hall at the North American International Livestock Exposition. Cattle arrive Monday, November 16, 2020. Check-in Tuesday, November 17, 2020. Contact Janie Tripp (601) 754-3993 / mtripp11@yahoo.com or Marty Tripp (601) 754-6993 or mtf3037@live.com.

RESCHEDULED FOR 2021:

GREAT LAKES REGIONAL ROUNDUP

Whitley County Fairgrounds, Columbia City, Indiana.

GLBGA FIELD DAYS

Columbia City, Indiana.

WISCONSIN FARM TECHNOLOGY DAYS

Huntsinger Farms, Eau Claire, Wisconsin.

2020 WORLD GALLOWAY CONGRESS

Still held in conjunction with the North American International Livestock Exhibition (NAILE). Registration opens January 1st, 2021.

***for more details about rescheduled and canceled events, visit the events calendar at beltie.org**

Reminder: Any application (membership, transfers, registration, etc.) submitted to CLRC will receive a \$10 transaction fee.

Canadian Livestock Records Corporation (CLRC)

All Registrar Services
2417 Holly Lane
Ottawa, Ontario, CANADA K1V 0M7

Caleigh Jerry caleigh.jerry@clrc.ca
Phone 877-833-7110, ext. 315
Fax 613-731-0704

Lisa Hutt lisa.hutt@clrc.ca
Phone 877-833-7110 Ext. 312
Fax 613-731-0704

Office Hours

8:00 a.m. to 4:00 p.m. Eastern Time, Monday to Friday.

Lisa may also be reached from 4:00 to 6:00 p.m. from Monday to Wednesday and until 5:30 p.m. on Thursday. She is not in the office on Friday, but Caleigh is still available to assist you that day.

MARKETING TO YOUR AUDIENCE USING PERSONAS

by Jayde Reilly, Midwest Herdsman

One of the most important pieces of putting together a business plan for your farm is to determine who your audience is. This may seem simple, but knowing the personalities of your potential customers is critical for effective marketing. Completing a persona exercise is a helpful tool to determine your audience's characteristics. Here is how you do it!

- Name, age, location, interests and other personal, background information.
- Business background information, including job title, whether or not they are a decision-maker or the type of influence they might have on decision-makers
- Target audience segment that each persona fits into. Be as specific as possible – for instance, consumer (buying beef, seedstock producer (buying genetic pieces for their herd), showman (buying projects for the fair)
- Main problems. Again, it's important to be specific. Drill down – what frustrates this buyer persona? What stands in the way of his or her goals?
- Orientation toward the job. This part of the customer persona can be incredibly telling.
- Open-ended questions, including those that the persona will ask at different points in the customer journey, and how they relate to his or her personality and position.
- Content preferences. Given what we know about the

customer persona, how does he or she like to consume content? This includes preferred channels, the tone, style and voice that will most resonate, content formats and more.

In the example below, I outlined someone who might be a persona for my farm; A consumer! Since Joe's characteristics and personality traits tell us that he values high quality beef and buying it locally. Joe is also very active on social media and gets most of his information from the internet. If I were to put a marketing plan directed towards my audience like Joe, I would focus on informational social media posts about beef such as cuts and grades of beef. I would also be open with my audience about how I raise my cattle and events at the farm.

Keep in mind: it is very possible that you may have multiple personas for your farm. Most businesses have several personas in their audience and only effective marketing is targeted to all of them.



JOE SMITH

45 YEARS OLD • DAD OF 4 BOYS • MADISON, WISCONSIN
ACCOUNTANT \$65,000/ANNUALLY



"FEEDING MY
FAMILY NUTRITIOUS
MEALS IS MY TOP
PRIORITY."

ABOUT:

Joe works at an accounting firm in Madison, Wisconsin and coaches his oldest son's baseball team. He is also an active member on the school board. Joe is the decision maker in his family and his friends reach out to him regularly for advice. To a cattle operation, Joe's persona would resemble a consumer (someone unrelated to the farm purchasing food products.)

MAIN PROBLEMS:

When purchasing beef, Joe gets overwhelmed with the options that are available but finds value in buying high quality proteins. Joe would rather buy food products from someone he knows or grow it himself.

CONTENT PREFERENCES:

Joe is active on social media and gets most of his information from the web.

PREVENTING FIRES IN BALED HAY & STRAW

Most hay fires occur within the first six weeks after baling. Understanding the causes of fires in stored hay and learning how to reduce fire hazards will protect your feed supply and could prevent the loss of time and money associated with a fire.

Causes of Fires in Baled Hay or Straw

Moisture content is the main factor that causes hay and straw to spontaneously combust. Hay fires are more common than straw fires, for reasons involving the type of forage, the moisture content in the stored forage, and heat production.

After forages are cut, respiration of plant fibers (burning of plant sugars to produce energy) continues in plant cells, causing the release of a small amount of heat. When the forages are cut, field dried, and baled at the recommended moisture level (20% or less), plant cell respiration slows and eventually ends.

When forages are baled at moisture levels of greater than 20%, the right environment is provided for the growth and multiplication of mesophilic (warm temperature) bacteria found in forage crops. Mesophilic bacteria release heat within the bale and cause the internal bale temperature to rise between 130°F and 140°F. At this temperature range, bacteria die and bale temperature decreases. Fire risk is greater for hay than for straw because a hay bale's interior temperature does not cool after the first initial heating cycle. The respiratory heat created by the mesophilic bacteria provides a breeding ground for thermophilic (heat loving) bacteria. Basically, the higher the moisture content, the longer a bale will remain at a higher temperature. For example, a bale with 30% moisture content may have higher interior bale temperature for up to 40 days. When thermophilic bacteria are present, they multiply and produce heat, which can raise interior bale temperature to over 170°F. At these temperatures, spontaneous combustion can occur.

Additional factors that contribute to the risk of hay fires include the volume of the mow or bale stack, bale density, and ventilation or air flow around the stacked bales. Bales with a lower density that are stacked lower and have good air flow and ventilation have a lower risk of overheating.

Decreasing the Risk of Fire

The best way to reduce the risk of a hay fire is to bale hay at a moisture content of 20% or less because at this moisture level, microbial activity decreases. There are several ways of reducing moisture content in baled hay:

- **Baling under appropriate conditions:** Weather plays a critical role in achieving the appropriate moisture level in baled hay. The recommended weather conditions for hay making are a slight wind and a humidity level of 50% or less. Because hay has a higher moisture content in the morning, it is recommended that you bale later in the day. The recommended practice for hay making is to mow hay in the morning and allow it to dry in the field for a minimum of one full day prior to baling.

- **Using specialized equipment:** Another way of decreasing moisture content is to use specialized haying equipment designed to increase drying rates. Such equipment includes tedders, windrow inverters, hay rakes, and conditioning equipment.
- **Using hay preservatives:** Hay preservatives, such as liquid propionic acid, applied to the hay during baling inhibit or reduce the growth of bacteria in hay with a high moisture content.

Another way to reduce the risk of a hay fire is to ensure that stored hay remains dry.

- When storing hay inside, make sure the barn or storage area is weather tight and has proper drainage to prevent water from entering the barn.

When storing hay outside, cover the hay with plastic or another type of waterproof material. If you are unable to cover the bales, arrange the bales so that air can circulate between them to promote drying. Bales can be protected from ground moisture by storing them on a bed of gravel or lifting them off the ground on used tires, poles, or pallets.

Monitoring the Temperature of Stored Hay

If you are concerned that hay may have been baled at too high a moisture content, monitor the internal bale temperature twice daily for the first six weeks after baling. For safety reasons, you must work with a partner when checking the temperature of stacked bales. One of you stands atop the bales to measure the internal temperature while the other observes. The person testing the hay should wear a harness and a lifeline that is attached to a secure object. In the event of an emergency, such a system allows the observer to pull the person checking the temperature out of the hay. Due to the potential dangers of this situation, this task should not be assigned to youth workers.

You can use a commercial thermometer to test the temperature of baled hay, but commercial thermometers are not always the appropriate length to monitor the interior zone of baled hay. If a commercial thermometer does not meet your needs, you can fabricate a probe from a 10 foot length of 3/4 inch iron pipe. Drill eight holes that are 3/16 inch in diameter about 3 inch from one end. Hammer that end of the pipe to form a sharp edge with which to probe. Insert the probe into a hay bale, and use a piece of light wire to lower a thermometer down into the end of the pipe. Alternatively, you may use a piece of 3/8 in. pipe that is 8 to 10 feet long to test the temperature of hay.

To test the temperature of the hay, place wooden planks or plywood across top of the bales so that the weight of the person standing on the hay is distributed evenly and he or she will be at less risk of falling into a burned-out cavity. Drive a commercial thermometer or a homemade probe into the bale of hay. If you use a fabricated probe, keep the thermometer in the probe for approximately 10 to 15 minutes to obtain the temperature reading. If you use a 3/8 in. pipe, leave the pipe in place for 20 minutes. When you remove the pipe from the hay, if the pipe is too hot to hold in your hand, then you should remove the hot hay.

The following temperature chart outlines further actions that may need to be taken depending on the temperature of the hay.

Critical Temperatures and Action Steps	
Temperature (oF)	Condition and Action
125	No action needed.
150	Hay is entering the danger zone. Check temperature twice daily. Disassemble stacked hay bales to promote air circulation to cool the hay
160	Hay has reached the danger zone. Check hay temperature every couple of hours. Disassemble stacked hay bales to promote air circulation to cool the hay
175	Hot spots or fire pockets are likely. Alert fire services to the possible hay fire incident. Stop all air movement around the hay.
190	With the assistance of the fire service, remove hot hay. Be aware that hay could burst into flames
200 or higher	With the assistance of the fire service, remove hot hay. Most likely, a fire will occur. Be aware that hay could burst into flames
(Source: National Resource, Agriculture, and Engineering Service [NRAES])	

Hay Fire Hazards

The following three hazards exist from hay fires:

1. **Flare-Ups:** When the internal hay bale temperature is between 150oF and 170oF, the potential exists for spontaneous combustion, and the hay should be moved to allow it to cool. If the temperature is at the higher end of the range, moving the hay could expose it to oxygen and cause flare-ups. Contact your local fire department and have charged water hoses available.
2. **Burned-Out Cavities:** These cavities form when temperatures deep within stored hay reached high temperature levels and the hay has burned. A person can become trapped in a burned-out cavity if he or she is walking over the top of the hay pile. Due to the risk of a person falling into a burned-out cavity, at least two people should investigate a hay mow.
3. **Toxic Gas:** Toxic gases such as carbon monoxide can be released by smoldering and burning hay. Chemically treated hay may emit additional toxic gas vapors. A trained fire-rescue worker with a self-contained breathing apparatus (SCBA) should be called to assist at the scene in either situation.

When a Fire Occurs

In the event of a fire, or even when hay is smoldering, contact the fire department immediately. Your next action step and main

priority should be to protect human life. Remember that you can replace hay, buildings, and equipment, but you cannot replace human life.

Before taking any action to fight a fire, consider other valuable actions you can take to address the situation prior to the arrival of fire fighters, including the following:

- Account for all personnel on your farm or ranch operation.
- Check the area for flammable products. If any are present, immediately leave the area and upon the fire fighters' arrival, make them aware of the flammable products.
- Determine whether electricity needs to be turned off in buildings.
- If the hay fire is located inside a building that houses live- stock, consider personal safety before relocating livestock to an area away from the structure.
- Remove any extra vehicles or machinery from the area around the fire to clear space for the fire service equipment.
- Stage bale-moving machinery out of the immediate fire area, but have it available to help move bales, as directed by fire fighters.
- Retrieve material safety data sheets (MSDS) for any chemical preservatives that may have been used on the hay and that fire fighters will need to review.
- Moving hay bales is hot, smoky, and physically demanding work that can cause injuries, exhaustion, smoke inhalation, and heart attacks. Individuals involved at the scene need to be monitored and should receive medical attention should they exhibit signs related to any of these health concerns.

Things to Remember:

- Most hay fires related to moisture levels occur in the first six weeks after baling.
- When baling hay, keep moisture levels at 20% or less.
- Keep baled hay dry by covering it or storing it inside.
- Monitor internal bale temperature on a regular basis.
- Youth workers should not be given the task of checking hay temperatures.
- If you store uncovered bales outside, arrange bales so that air can circulate around them.
- The use of ventilation changes based on the temperature of the hay. At lower temperatures, increased ventilation around the bales will help the hay return to an acceptable temperature. If hay temperatures reach 175oF, stop ventilating hay because the increased air flow could feed a fire.

Maintain MSDS for any crop preservatives that may have been used on the hay, and have the MSDS readily available for fire service personnel.

Preventing fires in baled hay and straw. (2012). Farm and Ranch eXtension in Safety and Health (FReSH) Community of Practice. Retrieved from <http://www.extension.org/pages/66577/preventing-fires-in-baled-hay-and-straw>. Reprinted with permission.

FOR SALE

NH- Holbrook Hill Farm offers a coming two-year-old black heifer, DOB 9/18/18, registration #44477, by Shiralee Moonshine, out of an excellent Ridgeview Mario daughter. She is a member of one of the foundation female families at Holbrook Hill Farm. The family has demonstrated exceptional productivity and longevity. The heifer's dam is still in production at 10 years of age, and her granddam remains in the herd at age 18. The heifer is a long-sided, deep-ribbed female with all the substance and natural thickness to make a superior brood cow. Holbrook Hill Farm also offers for sale a yearling black future herd sire, DOB 5/7/19, registration #45199, by a son of many times champion Holbrook Hill Zulu Warrior III. His dam is a super Mar-Pine Maurice daughter whose genetics trace to the famous Beaver Dam herd. He is a larger framed, extremely long-sided, nice-profiled bull, with excellent feet and legs, and a very sweet and gentle disposition. He should add a tick of frame, eye appeal, to moderate frame females. Contact Dave Richmond, (845) 323-9232 or heathcote.dr@gmail.com. Holbrook Hill Farm is located in Bedford, New Hampshire

VT- Four 100% Grass-fed yearling heifers for sale. Caleamont Ginger (Dun) [CAN]3227B DOB 04/25/19; Caleamont Genesis (Pending) DOB 04/20/19; Caleamont Golden Girl (Dun) (Pending) DOB 05/15/19; Caleamont Glory (Pending) DOB 07/15/19. All have been on halter. For more information please contact Brud McCabe, Caleamont Farm, Danville, VT (802) 748-5107 or email caleamont@myfairpoint.net. Website www.caleamontfarm.com.

WI- Two bred females for sale. Registered black Beltie females, Snyder Farm Yaka 33872B, born on April 19, 2011, and Snyder Farm Yoko 33869B, born on April 17, 2011. They have both been easy calving and good mothers on our grass fed, rotational grazing farm. Contact Pat Snyder (715)-723-8159, phone or text, or email me at patrder@live.com. Located in Chippewa Falls, WI.

NY- Twin Creek farms, Arcade, New York has a number of breeding bulls for sale. All are sired by Casa Ferdinand, 35087-B. PTC America 1st, 44998-B, dam Regina Laudis Bright Star, DOB 10/22/2019. Large belt, very friendly, halter broke. PTC Callisto, 45058-B, dam Kaide Patriot, DOB 8/30/2018. Large belt, beautiful conformation. PTC Donald Trump, 40358-B, dam Kaide Patriot, DOB 7/24/2016. Registered before the election, gentle like his dad, willing to breed. Casa Cattle Ferdinand, 35087-B, Sire MHF Thunder, 11553-B, Dam Casa Cattle Chilly, 29496-B, DOB 4/30/2012. Herd bull, every large and friendly, easy keeper, large belt, large testicles, great starter for young herd. Female: Kaide Patriot, 33952-B, DOB 6-14-2011. Excellent mother, easy keeper, wide belt. Call John or Josephine Peters, (716) 982-1642 or email tcfbeltedgallowaybeef@gmail.com.

CO- Seven registered cows available for sale, all very friendly, 44439-R, 37494-B, 40003-B, 42026-B, 42554-B, 42556-B and 45417-B-MI. Also, four red heifer calves born in March 2020 registrations pending and one black heifer calf, carries the red gene born in March 2020, registration pending. All from excellent genetics and all have nice belts and good conformation. For more information call Lillie Reibold, LVR Ranch, Berthoud, CO, (303) 288-8635 or 411home@gmail.com.

WI- Herd Reduction. Three Registered Female Belted Galloways For Sale. Hohenkamm Freesia 44046-B. Full Belt Black Heifer. Sire: Marbens McLean and Dam: Hav-a-Belt Bubbles. Hav-a-Belt Bubbles 37440-B. Full Belt Black Cow. Sire: Have-a-Belt Unbridled and Dam: Hav-a-Belt Yahoo. Hav-a-Belt Bo-K 37437-D. Full Belt Dun Cow. Sire: Hav-a-Belt Whiskey and Dam: Caldwell Spring. These cows are calm, have done well on pasture and have been easy to handle. They would make a nice starter herd. Nice pedigrees. Please call (608) 325-2578 for further information. Bruce and Tina Duemler, Hohenkamm Farm/Smock Valley LLC, Monroe, WI.

MO- Herd right-sizing; possible starter herd. Seven animals are available. Bull: Westwoods Tiger (AI) 40000-B. DOB 11/14/15. Sire: Hiland Farm Sid 7767-B; Dam: Westwoods Twinkie 35619-B. Excellent disposition, fully proven, has thrown majority heifers all with excellent wide belts and conformation. Two registered yearling heifers available. Scott's Breezy Hill Greta 44615-B. DOB 4/14/19. Sire: Hiland Oaks Captain 39341-B; Dam: Bear Springs Dynah Jo 41074-B. Scott's Breezy Hill Girlie 44562-B. DOB 5/18/2019. Sire: Westwoods Tiger (AI) 40000-B; Dam: Scott's Breezy Hill Chloe 41538-B. Cow Calf Pair: 4-year-old registered cow with registerable heifer calf by side. Bear Springs Dynah Jo 41074-B. DOB 7/27/16. Sire: Bear Springs Sir Gregory 32996-B; Dam: Bear Springs Yuletide 36872-B. Heifer calf DOB 4/28/20; will be registered as Scott's Breezy Hill Hilda; Sire: Westwoods Tiger (AI) 40000-B. Two Weanling heifers: Heifer Calf: DOB 11/14/19; will be registered as Scott's Breezy Hill Gracie. Sire: Westwoods Tiger (AI) 40000-B; Dam: Scott's Breezy Hill Daniel (AI). Heifer Calf: DOB 11/25/19; will be registered as Scott's Breezy Hill Gertie. Sire: Hiland Oaks Captain 39341-B; Dam: Bear Springs Edith Ann 42390-B. Don Scott, Scott's Breezy Hill, Oak Grove, MO. (816) 520-6192 or Ds65075@gmail.com.

AZ- Black Yearling Bull: Lazy B Tundra Kenai 45071B. DOB 6/14/19. Birth weight 65 pounds. Hypotrichosis N/N. He is partially halter broken, trained to lift all four feet for inspection and loves to be groomed. His Dam J&N Ranch Little Bit has excellent milk production and well-balanced udder. Kenai is on site at the Lazy B Ranch in Mayer, AZ. Contact Connie Bontrager at 623 201-0908 or csbontrager1@wmconnect.com

OK- Two open black two-year-old heifers sired by Rainbow Valley Tundra. Rainbow Valley Dusty 43650B. DOB: 1/9/18. Rainbow Valley Marie 43649B. DOB: 3/13/18. Perfect belts, nice conformation. Ready for breeding. Can be seen near Verden, OK. Contact Connie Bontrager (623) 201-0908 or csbontrager1@wmconnect.com

MI- Maple Lane Farm, Corunna, MI has three – 2018 Registered Belted Galloway heifers. Two are red/white; one is black/white. Two registered cows black/white born in 2015. Good mothers, ease in calving. We are a 100% grass fed rotational grazing farm. For pictures and more information email Julie or David Banas at jkbanas@hotmail.com. The black/white 2-year old heifer is getting registered.

IN- Whole herd reduction. Red Barn Farms is looking to rehome several of our Belted Galloways. We have registered and unregistered cattle available. Approximately 30 total. Bred cows, cow/calf pairs and yearling heifers. All black cattle with complete belts. Call (317) 412-1072 or email angelaabney21@yahoo.com for more information. Angela Abney Grant and Abney family of Red Barn Farms in Bargersville, IN.

NC- Bull for sale. Rockwater Old Hickory 44629-B DOB 6/29/18 Red carrier. Excellent temperament: very gentle bull, easy to handle. Good size and conformation, nice belt. Perfect for starter herd/ herdsman. Ann Furr, Salisbury, Rockwater Farm, NC (704) 798-3460 or drfurr611@gmail.com.

ME- Registered black yearling bull with red genetics for sale. Atwood Farm Mac 45253-B. DOB 4/16/19. Mac has four sisters and his mother on our farm which is the reason he is being sold. He is small farm raised and friendly. Mac will make a great future herd sire. His maternal granddam is a Gold Lifetime Award cow. His sire, paternal grandsire, and paternal granddam are all red. For more information contact- Kerry Atwood (617) 223-1164 or email kerryjatwood@yahoo.com. Poland, ME. Images can be viewed at www.atwoodfarmbelties.com.

Double M Ranch Dawson Masters



173 HCR 3303 W
Malone, TX 76660
972-465-0339

TxBeltedGalloway@yahoo.com
www.doublembelties.com

Y-KNOT Registered Belted Galloway Cattle



> Heifers, Cows & Bulls available
 > Organic: Wheat, Forage & Produce
 > Retail USDA Grass Fed Beltie Beef

Cateline, Savannah, Nina and Jeter Isely

Bird City, Kansas
 (785) 734 2380
 yknotfarmandranch@gmail.com


 Y Knot Farm & Ranch yknotorganic.com

FARM & RANCH

RECHARGE RANCH BELTIES

ERIN AND BRIAN O'ROURKE

"Stay and play with the Belties at a beautiful home and land."



Facebook: Recharge Ranch
 Vrbo.com/457371 for reference
 Bois D'Arc, Missouri
 (Springfield — 1 hour from Branson)
 (816) 718-1377
 brian@midwestpowerindustries.com

Ledgestone Farms




Bob & Sheri Riley
 Blanco, TX

830-833-4457
 ldgsin@moment.net

Registered Belted Galloway Cattle

www.LedgestoneFarms.com



David Garbasz
 Owner

Nick Schoellig
 Farm Manager

440 Hosner Mountain Road
 Stormville, New York 12582

(845) 656-4435
 Nick.Schoellig@gmail.com

KIYIWANA FARM

Mountain High Mini Cows
 4527 Yellow Creek Rd
 Evanston, WY 82930



Michael & Stacey Wilkerson
 307-789-2469
 Mountainhighminicows.com

Registered Belted Galloway Cattle

UPHILL UHF FARM


•Registered Belted Galloway and Galloway Cattle•

Jonathan Kagan, Owner 2947 Salt Point Turnpike
 Jerry Stephens, Manager Clinton Corners, NY
 845. 594.9749

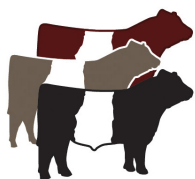
About Classifieds: Your classifieds required contact information - name, farm, location, phone and email. All classified ads are automatically placed on beltie.org with a two-month limit on classified insertions. Photos are FREE when placed on belie.org. One photo per animal. Email ads to executivedirector@beltie.org or by fax (608) 527-4811 or phone (608) 220-1091. We encourage members to submit ads by the 25th of the month to be included in the upcoming issue.

Tattoo Year Code

The year code on tattoos for animals born in year **2020** is



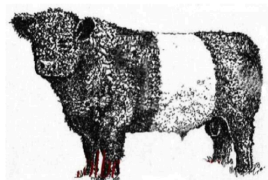
H



Belted Galloway Society
 Dr. Victor Eggleston, Executive Director
 N8603 Zentner Rd, New Glarus, WI 53574
 executivedirector@beltie.org
 Phone (608) 220-1091 Fax (608) 527-4811

HOLBROOK HILL FARM

*World Class
 Genetics
 Imported
 Semen*



*Young Herd
 Sires
 Open Heifers
 available*

Steven Silberberg
 47 Holbrook Hill Road
 Bedford, NH 03110

Phone: 603-668-6400
 Fax: 603-668-6470
 E-mail: hhf18@aol.com

MAGNOLIA TRACE FARM

Herd Sires - Females - Semen - Embryos



Marty & Janie Tripp Brookhaven, Mississippi
 (601) 754-3993 (601) 833-3993 mtfbelties@gmail.com

RANDY HALL
 (207) 860.8431
 DUSTIN JAMES
 (207) 491.5980

EAST DIXFIELD, MAINE



WHERE TOMORROW'S GENETICS BEGIN TODAY



Anderson Hill Farms

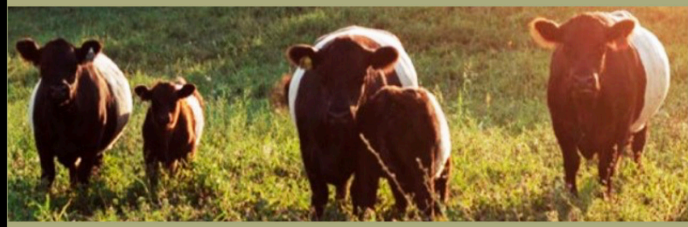
Mike Allen, Manager (802) 353-8606
 300 Anderson Hill Road, West Rutland, Vermont 00577
andersonhillmike@gmail.com
www.andersonhill.com

Office: (802) 438-4900

Fax: (802) 438-2898

HC SIMS FARMS

525 Sparrow Lane, Harrodsburg, Kentucky 40330
 724.531.7994 or hcsimsfarms@aol.com
[facebook.com/hcsimsfarms](https://www.facebook.com/hcsimsfarms)
Beltiesinthebluegrass.com



Greg & Pat Hipple - Solon, IA
 319-430-6664 - sbelties@gmail.com